

Who built the ark? / The old ark's a-moverin'

Two Spirituals combined
arr. Gwyn Arch

Lively (♩ = c.126)

Tenor *f* No - ah, No - ah.

Bass *f* No - ah, No - ah.

Piano *mf*

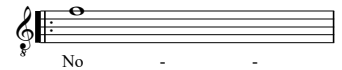
5 *mf*

Bro-ther No - ah built the ark. 1.Now did-n't old No - ah build the ark?_ He
2.He built it long, both wide_ and tall,_ with

mf

Who built the ark? Bro-ther No - ah built the ark. No - ah built it,

optional SOLO
2nd time only



1. built it out_ of a hick - or - y bark... large and the small. And the old ark's a-mov-er- in', a -
plen - ty room_ for the

No - ah built it. built it. And the old ark's a-mov-er- in', a -

2. *f*

13

ah, No - ah built - the ark. -

mov-er- in', a- mov-er- in'. The old ark's a- mov-er- in' and I thank God.

mov-er- in', a- mov-er- in'. The old ark's a- mov-er- in' and I thank God. Who built the ark?